

# Plastic Mailer

Our plastic mailer is an exciting new way to promote a company, product or service. With high quality commercial print and a rigid 20 or 30 mil layered plastic material this mailer is sure to stand out among all the other direct mail. The detachable CR-80 card is a retainable piece that will continue to promote a company many months after the mailer is received. With this unique design the response rate is sure to be higher and the life expectancy longer.

We also support you and your customer with full mailing fulfillment. Addressing, personalization and variable print are done in line for efficiency. CASS certification, presort and NCOA presort help ensure precision and accuracy with the mailing. With this mail piece we handle everything so your customer can sit back and take care of their customers.

## Applications

- Membership card mailer
- Product promotion
- Calendar promotion
- Service contact card mailer
- School fundraiser mailer
- Emergency notification card
- Insurance cards
- Store moving notifications
- Warranty cards
- Referral cards

## Markets

- Service companies
- Casinos
- Retailers
- Non-profit organization
- Schools/Universities
- Alumni associations
- Hotels
- Hospitals/Clinics
- Restaurants
- Spas
- Manufacturers
- Clubs
- Automotive dealers
- Insurance agencies
- Real estate agents
- Trade show companies

## Features

- Durable 20 or 30 mil layered plastic material
- Thick laminate over print
- In-line addressing and variable imaging/barcoding
- High quality commercial print
- Quantities of 200 up to a million +

## Benefits

- Durable plastic card withstands the wear and tear of postal equipment
- Unique design will stand out in the mail
- Detachable card extends the life expectancy of the mailer
- Variable graphics / barcoding allow for a 1 to 1 marketing promotion
- Detachable card can be used as a tracking device
- Complete fulfillment on mailer
- Quick turn times
- Bold marketing approach



# Layered Plastic Mailer

**Dennis Griffith**  
 Biz Graphics, Inc.  
 7248 Lake Drive  
 Fort Myers, FL 33908  
 Phone 239.466.3036  
 Fax 239.466.3566



## Layered Plastic Mailer Options

1 Up Card w/ Keytag 5 1/2" x 4"

2 Up 5 1/2" x 4"

1 Up 8 7/16" x 3 1/2"

2 Up 8 1/2" x 3 7/8"

1 Up 5 1/2" x 4"



# Plastic PVC Cards

## Applications

- Membership cards
- Identification cards
- Pre-paid phone cards
- Frequent buyer cards
- Security cards
- Season passes
- Wallet calendars
- Check cashing cards
- Event cards
- Hospital cards
- Luggage tags
- Rulers
- Novelties
- Gift cards
- Hotel key cards

## Features

- Photo quality
- Quantities of 250 and up
- Affixing available
- Signature panel available
- Custom die cutting
- UV gloss or Matte Finish
- 4cp
- 15, 20, 30 mil standard
- Other thicknesses available
- Bar coding, numbering, mag stripes and encoding available

## Markets

- Associations
- Insurance companies
- Clubs/Organizations
- Libraries
- Hotels/Resorts
- Clinics/Medical facilities
- Advertising/Marketing
- Sales promotions
- Retail
- Restaurants
- Schools

## Benefits

- Variety of weights for single card application
- Affixing allows clean, easy removal from the carrier
- Competitive pricing
- Waterproof



# VIP 30 Card

Our VIP 30 Card is a great promotional solution. It features high quality commercial print and a durable 30 Mil, laminated, removable CR80 card integrated into a non-laminated, flexible, synthetic-paper. This piece is designed to fit in a standard 9" envelope for easy mailing. The detachable CR-80 card is a retainable piece that will continue to promote a company many months after the mailer is received. With this unique design you can get a great promotional piece without the cost of a traditional full laminated piece.

We also support you and your customer with full mailing fulfillment. Addressing, personalization and variable/ barcoding print are done in line for efficiency. Cass certification, presort and NCOA presort help ensure precision and accuracy with the mailing. With this mail piece we handle everything so your customer can sit back and take care of their customers.

## Applications

- Membership card mailer
- Product promotion
- Calendar promotion
- Service contact card mailer
- School fundraiser mailer
- Emergency notification card
- Insurance cards
- Store moving notifications
- Warranty cards
- Referral cards

## Features

- Flexible 10 mil synthetic material with integrated 30 mil laminated card
- Thick laminate over print
- In-line addressing and variable imaging/barcoding
- High quality commercial print
- Complete fulfillment on mailer
- Quantities of 200 up to a million +
- Quick turn times

## Markets

- Service companies
- Casinos
- Retailers
- Non-profit organization
- Schools/Universities
- Alumni associations
- Hotels
- Hospitals/Clinics
- Restaurants
- Spas
- Manufacturers
- Clubs
- Automotive dealers
- Insurance agencies
- Real estate agents
- Trade show companies

## Benefits

- Full laminated card at reduced cost
- Durable plastic card withstands the wear and tear of postal equipment
- Detachable card extends the life expectancy of the mailer
- Variable graphics / barcoding allow for a 1 to 1 marketing promotion
- Detachable card can be used as a tracking device



# DriTac™ Cards

Our DriTac™ Card product is yet another option for a laser compatible plastic membership card.

This is a true plastic card that can be affixed in any position and up to 6 cards on an 8 ½" x 11" sheet. It is heat, moisture and tear resistant. It provides excellent toner adhesion for the face of the card. Our DriTac™ Card is quickly and easily removed.

## Applications

- Membership cards
- Health plan I. D. cards
- Special promotions
- Prescription cards

## Markets

- Insurance
- Schools/Universities
- Libraries
- Restaurants
- Alumni associations
- Hotels
- Resorts
- HMO
- Auto clubs
- Video stores
- Zoos/Museums
- Book stores
- Sales promotions
- Banks
- Health clubs

## Features

- Durable 7Mil plastic card
- Affixed to a carrier
- Removes easily and cleanly

## Benefits

- Can be affixed to various carrier sizes (width and depth)
- Laser compatible
- Cut sheet and continuous format
- Material is moisture and tear resistant
- Available in various shapes and sizes
- Can be printed 4 color process
- Can apply multiple cards on a carrier

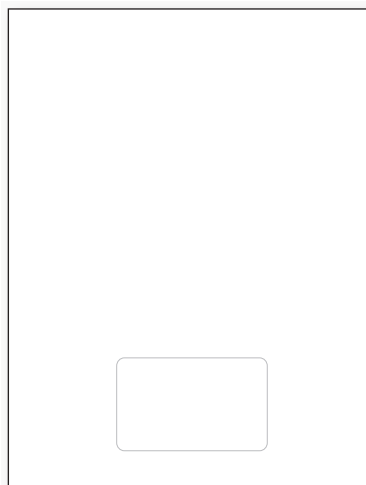


# DriTac™ Cards

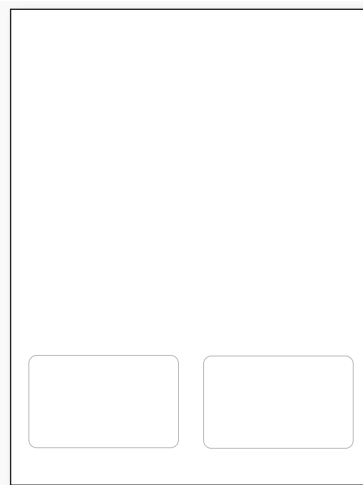
**Dennis Griffith**  
 Biz Graphics, Inc.  
 7248 Lake Drive  
 Fort Myers, FL 33908  
 Phone 239.466.3036  
 Fax 239.466.3566



## DriTac™ Card Stock Options



1 Up



2 Up



# Layered Plastic Cards & Carriers

We offer a wide variety of layered plastic card options to address the identification, marketing and promotional needs of today's customers. Our high resolution, photo quality cards are used in markets ranging from Promotional to Health Care/ID and Insurance. Our broad range of support options includes personalization, full process color, barcode, scratch off, affixing and magnetic stripes.

## Applications

- Membership cards
- Frequent buyer cards
- Wallet calendars
- Contact cards
- Fundraiser cards
- ID Badges
- Hospital cards
- Gift cards
- Business cards
- Loyalty cards
- Mailers
- Hotel key cards

## Markets

- Associations
- Insurance companies
- Clubs/Organizations
- Libraries
- Hotels/Resorts
- Clinics/Medical facilities
- Government offices
- Advertising/Marketing
- Sales promotions
- Gift shops
- Jewelry stores
- Restaurants
- Tanning salons
- Schools

## Features

- High quality digital process
- Variety of custom carrier sizes
- 20 and 30 mil options standard
- Other thicknesses available
- Variety of laminates
- Quick turn times
- Quantities of 100 up to 1 million +
- Full variable color available
- In-Line bar coding and imaging

## Benefits

- Faster turn times get the product to your customer when they need it
- Higher quality print allows for a better company image
- Less expensive than plastic layered cards



## Layered Plastic Cards & Carriers

**Dennis Griffith**  
**Biz Graphics, Inc.**  
7248 Lake Drive  
Fort Myers, FL 33908  
Phone 239.466.3036  
Fax 239.466.3566



## Layered Plastic Card Options

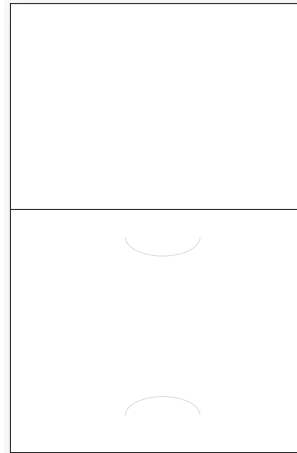


3 3/8" x 2 1/8" (CR80)

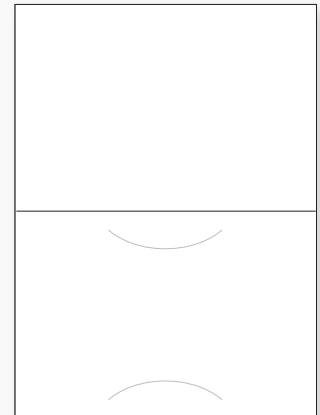
## Carrier Options



2.8" x 8.5"



4" x 6"



4" x 5.5"





# RealCard®

Our RealCard® product is an awesome addition to our line of plastic membership cards. RealCard® answers all of your customer's needs when it comes to a laser or ink jet compatible plastic card. RealCard® can be fed through the 8 1/2" or 11" feed path of the printer.

## Applications

- Insurance cards
- Alumni cards
- Membership cards
- Union/Health plan I. D.
- Security passes
- Season passes
- Frequent buyer cards
- Check cashing cards
- Hospital cards
- Prescription cards
- Discount cards
- Student I. D. cards

## Features

- True plastic card
- Durable plastic card
- Proprietary one-step production
- Removes easily from carrier sheet
- Potential for shapes other than membership cards
- Simplex and duplex laser printable
- Lay flat construction
- Heat, tear and moisture resistant
- 4cp
- 5 stock formats available

## Markets

- Educational Institutions
- Resorts
- Insurance companies
- Associations
- Restaurants
- Libraries
- Hotels
- Medical facilities
- Sales promotions
- Zoos
- Museums
- Pharmacy companies
- Travel clubs
- Banks/Credit unions
- Manufacturers
- Trade show groups

## Benefits

- Cost effective method assures print registration, card registration and color match
- Material is heat, moisture and tear resistant
- Provides excellent toner adhesion and durable printed image
- 100% of front and back of the card can be printed on and/or variably imaged
- Stock imprinting - spot or 4cp





# Table Talkers™

Our fastest growing product is available in many styles and sizes. This promotional item is shipped flat. You simply bend the base to display the free standing unique design.

## Applications

- Product promotion
- Hotel rooms
- Restaurants
- Counter top displays
- Specials of the day
- Events

## Markets

- |                            |                      |
|----------------------------|----------------------|
| • Service companies        | • Hotels             |
| • Casinos                  | • Hospitals/Clinics  |
| • Retailers                | • Spas               |
| • Restaurants              | • Manufacturers      |
| • Non-profit organizations | • Clubs              |
| • Schools/Universities     | • Automotive dealers |
| • Alumni associations      | • Insurance agencies |
| • Trade shows              | • Real estate agents |

## Features

- Durable 30 mil plastic material
- Thick laminate over print
- High quality commercial print
- Quantities of 25 up to a million+
- Matching cards, carrier and promo material available

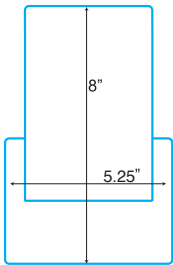
## Benefits

- Unique design
- Durable plastic, withstands wear and tear
- Variable graphics allow for a 1 to 1 marketing promotion

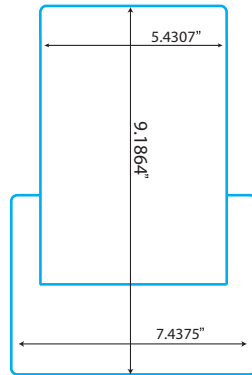


Vertical Table Talkers™

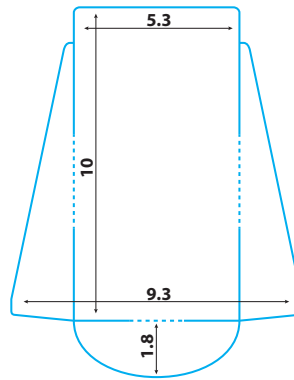
Small with Square Base



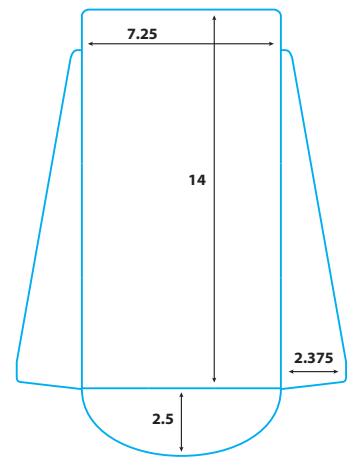
Medium with Square Base



Vertical Sides Medium

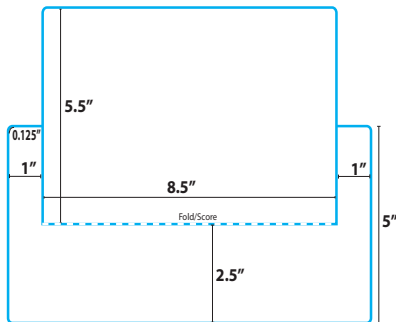


Vertical Sides Large

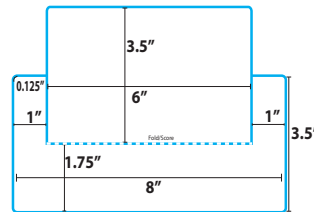


Horizontal Table Talkers™

Medium



Small



\*Most popular sizes are listed. Custom sizes are also available.



# Plastic Spin Wheels

Plastic Spin Wheels make it easy for anyone to make a decision or select a product. By simply spinning a wheel, pertinent information is provided instantly.

## Applications

- Calculating interest rates
- Gestation calculations
- Industries with static and repetitive calculations

## Features

- Short run quantities
- Variety of substrates and sizes
- Four color process face and back
- Variable data imaging in black or full color
- Composition available
- Laminates available

## Markets

- Construction
- Building trades
- Laboratories
- Medical
- Advertising/Marketing
- Financial
- Manufacturing

## Benefits

- Short run orders provide options for quick updates and changes
- Digital files mean accuracy and quicker deliveries
- High impact color in short run quantities



## Plastic Spin Wheel Options

These are a few of our most popular options but many others are available.

